

52: DOORS

SPRING – GATE SEAL, FWD ENTRY DOOR

ATA Chapter: 52-09



PRODUCT DESCRIPTION

The Springs are installed at the FWD Entry Door Upper and Lower Gates and are attached to Seal Retainers. They assist in maintaining proper seal positioning by exerting force on the Bulb and Diaphragm Seals when the FWD Entry Door is opened

ATS PART NUMBER

141A6243-1ATSMRO
141A6243-2ATSMRO

OEM PART NUMBER

141A6243-1
141A6243-2

TECHNICAL SPECIFICATIONS

- FAA PMA PQ5315NM, Supplement 140
- Equivalent in fit, form and function to OEM part

AIRCRAFT APPLICATION

Boeing 737-700/800/900/900ER/8/9

STOP PLATE ASSY – FWD ENTRY DOOR, UPR

ATA Chapter: 52-10



PRODUCT DESCRIPTION

The Stop Plate Assy is a component of the FWD Entry Door Lower Hinge Assy. It aligns the Radius Link Stop Pin during opening/closing of the door to protect the fuselage structure

ATS PART NUMBER

141A6287-2ATSMRO

OEM PART NUMBER

141A6287-2

TECHNICAL SPECIFICATIONS

- FAA PMA PQ5315NM, Supplement 129
- Equivalent in fit, form and function to OEM part

AIRCRAFT APPLICATION

Boeing 737-700/800/900/900ER/8/9

GUIDE TRACK ASSEMBLY – FWD ENTRY DOOR, STA 348.2

ATA Chapter: 52-11, 53-11



PRODUCT DESCRIPTION

Interfaces with the fwd entry door-side ball guide to ensure door is properly located during open/close

ATS PART NUMBER

141A6206-2ATSMRO

OEM PART NUMBER

141A6206-2

TECHNICAL SPECIFICATIONS

- FAA PMA PQ5315NM, Supplement 81
- Equivalent in fit, form and function to OEM assembly

AIRCRAFT APPLICATION

Boeing 737-600/700/800/900/900ER/8/9

52: DOORS

SPIGOT - HINGE

ATA Chapter: 52-11



141A6271-3ATSMRO



141A6271-4ATSMRO

PRODUCT DESCRIPTION

The Spigots are part of the FWD LH Entry Door Hinge Assy, which is the primary support for the entry door during opening/closing operations. The Spigots support the weight of the door and transfer torque to/from the hinge arms to open and close the door

ATS PART NUMBER

141A6271-3ATSMRO
141A6271-4ATSMRO

OEM PART NUMBER

141A6271-3
141A6271-4

TECHNICAL SPECIFICATIONS

- FAA PMA PQ5315NM, Supplement 107
- Equivalent in fit, form and function to OEM part

AIRCRAFT APPLICATION

Boeing 737-600/700/700C/800/900/900ER/8/9

COVER PLATE ASSEMBLY

ATA Chapter: 52-11



PRODUCT DESCRIPTION

The PMA article is installed on the FWD LH Entry Door Lining. It functions to close out the cutout in the door liner where the interior door handle is installed, mitigating dust and debris intrusion

ATS PART NUMBER

411A2119-135AATSMRO

OEM PART NUMBER

411A2119-135A

TECHNICAL SPECIFICATIONS

- FAA PMA PQ5315NM, Supplement 104
- Equivalent in fit, form and function to OEM part

AIRCRAFT APPLICATION

Boeing 737-600/700/700C/800/900/900ER

FITTING - AFT DOOR, STA 992.8

ATA Chapter: 52-11, 53-11



PRODUCT DESCRIPTION

Interfaces with the aft entry and galley door-side ball guide to ensure door is properly located during open/close

ATS PART NUMBER

654A0004-24ATSMRO

OEM PART NUMBER

654A0004-24
147A6158-1

TECHNICAL SPECIFICATIONS

- FAA PMA PQ5315NM, Supplement 81
- Equivalent in fit, form and function to OEM part

AIRCRAFT APPLICATION

Boeing 737-600/700/700C/800/900/900ER/8/9

52: DOORS

FITTING – GALLEY DOOR, STA 328

ATA Chapter: 52-11, 53-11



PRODUCT DESCRIPTION

Interfaces with the fwd galley door-side ball guide to ensure door is properly located during open/close

ATS PART NUMBER

654A0004-28ATSMRO

OEM PART NUMBER

654A0004-28
141A6557-1

TECHNICAL SPECIFICATIONS

- FAA PMA PQ5315NM, Supplement 81
- Equivalent in fit, form and function to OEM part

AIRCRAFT APPLICATION

Boeing 737-600/700/700C/800/900/900ER/8/9

GUIDE ARM ASSEMBLY – AFT ENTRY GALLEY DOOR

ATA Chapter: 52-13



PRODUCT DESCRIPTION

The Entry and Galley Door Guide Arm Assembly's function to assist in guiding the doors when opening, closing, and in holding the doors open

ATS PART NUMBER

65-52854-7ATSMRO

OEM PART NUMBER

65-52854-7

TECHNICAL SPECIFICATIONS

- FAA PMA PQ5315NM, Supplement 84.
- Equivalent in fit, form, and function to OEM assembly

AIRCRAFT APPLICATION

Boeing 737-600/700/700C/800/900/900ER/8/9

COVER PLATE ASSEMBLY

ATA Chapter: 52-13, 52-41



PRODUCT DESCRIPTION

Decorative cover for entry door handle

ATS PART NUMBER

411N2069-8BATSMRO (Soft White)
411N2069-8DATSMRO (Bright White)

OEM PART NUMBER

411N2069-8()

TECHNICAL SPECIFICATIONS

- FAA PMA PQ5315NM, Supplement 19
- Equivalent in fit, form and function to OEM assembly
- Available in multiple colors to match original

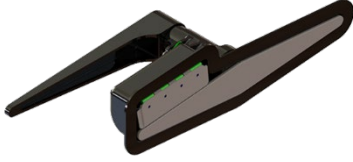
AIRCRAFT APPLICATION

Boeing 737-600/700/800/900ER/8/9

52: DOORS

EVERLATCH™ CARGO DOOR LATCH – AFT & FWD

ATA Chapter: 52-31



PRODUCT DESCRIPTION

The EverLatch™ Cargo Door Latch by ATS is a cost-effective solution to a long-standing cargo door latch problem where operators experience fuselage skin and cargo door housing damage from sheared off nylon bumpers. The EverLatch is easy to install and is currently in service with airlines operating Boeing 737NGs

TECHNICAL SPECIFICATIONS

- FAA Certified Design under STC # ST02525SE, PMA obtained
- Direct replacement for OEM part at a reduced cost

AIRCRAFT APPLICATION

Boeing 737-600/700/700C/800/900/900ER/8

ATS PART NUMBER

718932-100-101 (AFT)
718932-111-101 (FWD)

OEM PART NUMBER

H414-53 (AFT)
H414-29 (FWD)

BALL CLUTCH SHAFT

ATA Chapter: 52-34



PRODUCT DESCRIPTION

Protects the Main Cargo Door Power Drive Unit when excessive torque is applied
Component of Main Cargo Door Hinge Power Drive Unit

TECHNICAL SPECIFICATIONS

- FAA PMA PQ5315NM, Supplement 5
- Equivalent in fit, form and function to OEM assembly
- Carbonized to increase wear resistance
- Alloy steel material

AIRCRAFT APPLICATION

Boeing 757-200/200PF/200CB/767-200/300/300F/400ER

ATS PART NUMBER

732-14281ATS

OEM PART NUMBER

732-14281

HINGE SUPPORT – LAV SERVICE

ATA Chapter: 52-40



PRODUCT DESCRIPTION

The Hinge Supports are components of the 146A7410-6ATSPMA Door Assy. They attach the Door Assy to fuselage structure

TECHNICAL SPECIFICATIONS

- FAA PMA PQ5315NM, Supplement 144
- Equivalent in fit, form and function to OEM part

AIRCRAFT APPLICATION

Boeing 737-700/800/8

ATS PART NUMBER

146A7404-3ATSPMA
146A7404-4ATSPMA

OEM PART NUMBER

146A7404-3
146A7404-4

52: DOORS

DOOR ASSY – LAV SERVICE

ATA Chapter: 52-40



PRODUCT DESCRIPTION

The Lav Service Door is located on the AFT/LWR LH surface of the fuselage, spanning STA 847 - STA 867. It gives access to the Lav Drain Outlet and Rinse Fitting, allowing Ground Service crew to drain the Vacuum Waste System and rinse the Waste Tank

TECHNICAL SPECIFICATIONS

- FAA PMA PQ5315NM, Supplement 144
- Equivalent in fit, form and function to OEM part

AIRCRAFT APPLICATION

Boeing 737-700/800/8

ATS PART NUMBER

146A7410-6ATSPMA

OEM PART NUMBER

146A7410-6

DOOR – LAV SERVICE

ATA Chapter: 52-40



PRODUCT DESCRIPTION

The Lav Service Door is the detail component of the 146A7410-6ATSPMA Door Assy

TECHNICAL SPECIFICATIONS

- FAA PMA PQ5315NM, Supplement 144
- Equivalent in fit, form and function to OEM part

AIRCRAFT APPLICATION

Boeing 737-700/800/8

ATS PART NUMBER

146A7411-2ATSPMA

OEM PART NUMBER

146A7411-2

HINGE ASSY – LAV SERVICE

ATA Chapter: 52-40



146A7414-7ATSPMA

PRODUCT DESCRIPTION

The Hinge Assys are components of the 146A7410-6ATSPMA Door Assy. They facilitate opening/closing of the Door Assy

TECHNICAL SPECIFICATIONS

- FAA PMA PQ5315NM, Supplement 144
- Equivalent in fit, form and function to OEM part

AIRCRAFT APPLICATION

Boeing 737-700/800/8

ATS PART NUMBER

146A7414-7ATSPMA

146A7414-9ATSPMA

OEM PART NUMBER

146A7414-7

146A7414-9



146A7414-9ATSPMA

52: DOORS

GUIDE ARM ASSEMBLY – FWD GALLEY DOOR

ATA Chapter: 52-41



PRODUCT DESCRIPTION

The Entry and Galley Door Guide Arm Assembly's function to assist in guiding the doors when opening, closing, and in holding the doors open

ATS PART NUMBER

69-20321-4ATSMRO

OEM PART NUMBER

69-20321-4

TECHNICAL SPECIFICATIONS

- FAA PMA PQ5315NM, Supplement 84.
- Equivalent in fit, form, and function to OEM assembly

AIRCRAFT APPLICATION

Boeing 737-600/700/700C/800/900/900ER/8/9

GUIDE ASSY – CENTERING, FWD GALLEY DOOR

ATA Chapter: 52-41



PRODUCT DESCRIPTION

The Guide Assy is installed on the Aft edge of the Fwd Galley Door. It guides the door's opening and closing by interfacing with the frame mounted Centering Guide Fitting

ATS PART NUMBER

141A6549-1ATSPMA

OEM PART NUMBER

141A6549-1

TECHNICAL SPECIFICATIONS

- FAA PMA PQ5315NM, Supplement 132
- Equivalent in fit, form and function to OEM part

AIRCRAFT APPLICATION

Boeing 737-700/800/900/900ER/8/9

ROD ASSEMBLY – A/C ACCESS DOOR SUPPORT

ATA Chapter: 52-48



PRODUCT DESCRIPTION

Used to manually hold the ECS Access Door in an open configuration during maintenance operations

ATS PART NUMBER

65-74573-3ATSMRO

OEM PART NUMBER

65-74573-3

TECHNICAL SPECIFICATIONS

- FAA PMA PQ5315NM, Supplement 55
- Equivalent in fit, form and function to OEM assembly

AIRCRAFT APPLICATION

Boeing 737-600/700/700C/800/900/900ER/8/9

52: DOORS

HINGE ASSY – ECS ACCESS DOOR

ATA Chapter: 52-48



PRODUCT DESCRIPTION

The Hinge Assys are components of the ECS Access Door Assy. They function to allow the door to open and close during maintenance

ATS PART NUMBER

149A7234-1ATSMRO
149A7234-13ATSMRO
149A7234-14ATSMRO

OEM PART NUMBER

149A7234-1
149A7234-13
149A7234-14

TECHNICAL SPECIFICATIONS

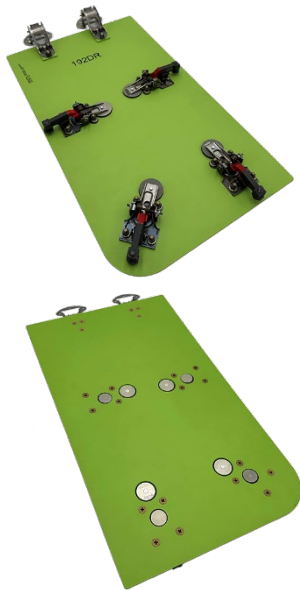
- FAA PMA PQ5315NM, Supplement 106
- Equivalent in fit, form and function to OEM part

AIRCRAFT APPLICATION

Boeing 737-600Series/700 Series/700C Series/
800 Series/900 Series/900ER Series/
8/9/8200

DOOR ASSEMBLY – HIGH PRESSURE AIR CONNECT

ATA Chapter: 52-48, 53-40



PRODUCT DESCRIPTION

Located at STA 540, RBL 14, the Door Assy is a component of the lower wing-to-body fairing skin panel. During maintenance it gives access to connect an external source of compressed air to the Pnuematic Manifold

ATS PART NUMBER

149A7241-9ATSMRO

OEM PART NUMBER

149A7241-9

TECHNICAL SPECIFICATIONS

- FAA PMA PQ5315NM, Supplement 96
- Equivalent in fit, form and function to OEM part

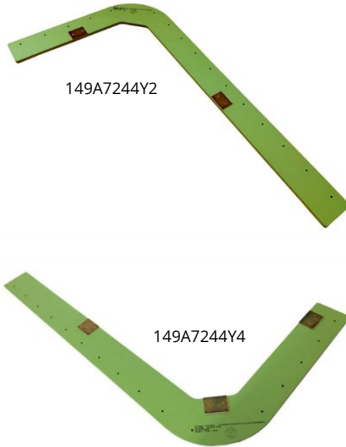
AIRCRAFT APPLICATION

Boeing 737-700/700C/800/900ER/8/9/8200

52: DOORS

DOUBLER ASSEMBLY

ATA Chapter: 52-48



PRODUCT DESCRIPTION

Doubler Assy provides a stiffening element for the composite Air Conditioning Access Door around the hole for the High Pressure Connect Access Door

ATS PART NUMBER

149A7244Y2ATSMRO
149A7244Y4ATSMRO

OEM PART NUMBER

149A7244-2, F8149A7244Y2
149A7244-4

TECHNICAL SPECIFICATIONS

- FAA PMA PQ5315NM, Supplement 40
- Equivalent in fit, form and function to OEM assembly

AIRCRAFT APPLICATION

Boeing 737-600/700/700C/800/900

SPACER – VACUUM LAVATORY, SECTION 46

ATA Chapter: 52-49



PRODUCT DESCRIPTION

Spacer is located at two places on the hinges of the Waste Service Access Door, which provides the maintainer a source for servicing the waste storage tank

ATS PART NUMBER

146A7404-5ATSMRO

OEM PART NUMBER

146A7404-5

TECHNICAL SPECIFICATIONS

- FAA PMA PQ5315NM, Supplement 68.
- Equivalent in fit, form and function to OEM.
- Material: Aluminum Alloy

AIRCRAFT APPLICATION

Boeing 737-600/700/800/900/900ER/8/9

STIFFENER – WATER SERVICE PANEL, AFT CARGO COMPARTMENT

ATA Chapter: 52-49, 53-13



PRODUCT DESCRIPTION

Located between STA 907 and STA 927 and mounts to the supporting intercostals to provide additional stiffness to the water tank service panel support structure

ATS PART NUMBER

147A7221Y32ATSMRO

OEM PART NUMBER

147A7221Y32

TECHNICAL SPECIFICATIONS

- FAA PMA PQ5315NM, Supplement 69.
- Equivalent in fit, form and function to OEM.
- Material: Aluminum Alloy

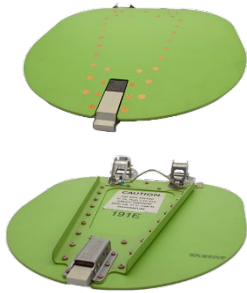
AIRCRAFT APPLICATION

Boeing 737-600/700/700C/800/900/900ER/8/9

52: DOORS

DOOR ASSEMBLY - FWD FAIRING ACCESS

ATA Chapter: 52-49, 53-30, 53-51



PRODUCT DESCRIPTION

The Door Assembly is located between STA 520 and STA 540 on the belly of the aircraft, and provides access to the ground conditioned air connector

ATS PART NUMBER

149A7148-23ATSMRO

OEM PART NUMBER

149A7148-23

TECHNICAL SPECIFICATIONS

- FAA PMA PQ5315NM, Supplement 85.
- Equivalent in fit, form, and function to OEM assembly

AIRCRAFT APPLICATION

Boeing 737-700/700C/800/900ER/8/9

HOLD OPEN STRUT ASSEMBLY

ATA Chapter: 52-49



PRODUCT DESCRIPTION

A strut for holding the Aft Fairing Brake Accumulator Door open during maintenance procedures

ATS PART NUMBER

149A7564-2ATSMRO

OEM PART NUMBER

149A7564-2

TECHNICAL SPECIFICATIONS

- FAA PMA PQ5315NM, Supplement 30
- Equivalent in fit, form and function to OEM assembly
- Attaches to the Aft Fairing Brake Accumulator Door
- Stows securely against the inner surface of the door for flight

AIRCRAFT APPLICATION

Boeing 737-600/700/700C/800/900/900ER/8

BRACKET ASSEMBLY - BRAKE ACCUMULATOR DOOR

ATA Chapter: 52-49



PRODUCT DESCRIPTION

The Bracket Assy is installed on the Aft Fairing Brake Accumulator Access Door, a component of the Wing-to-Body Fairing. It acts as an attachment/hinge point for a strut to secure the door while open during maintenance or inspection

ATS PART NUMBER

149A7565Y3ATSMRO

OEM PART NUMBER

149A7565Y3

TECHNICAL SPECIFICATIONS

- FAA PMA PQ5315NM, Supplement 116
- Equivalent in fit, form and function to OEM part

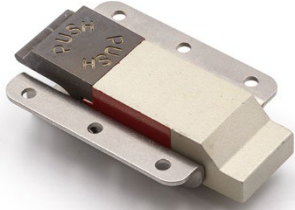
AIRCRAFT APPLICATION

Boeing 737-700/800/900/900ER/8

52: DOORS

FORWARD FAIRING ACCESS DOOR LATCH ASSEMBLY

ATA Chapter: 52-49



PRODUCT DESCRIPTION

Allow aircraft maintenance personnel to open and/or secure FWD Fairing Access Door

ATS PART NUMBER

H498-9-163-200ATS

OEM PART NUMBER

H498-9-163-200

TECHNICAL SPECIFICATIONS

- FAA PMA PQ5315NM, Supplement 13 and 17
- Equivalent in fit, form and function to OEM assembly
- Red handle paint indicates an improperly-secured latch

AIRCRAFT APPLICATION

Boeing 737-600/700/700C/800/900/900ER/8/9

© 2026 Aviation Technical Services – 4/2026



Trusted Partners
Supporting Flight

For more information contact:

sales@rangeraav.com

+1 972 245 6699

ATSmro.com